

# What to do if you suspect plagiarism

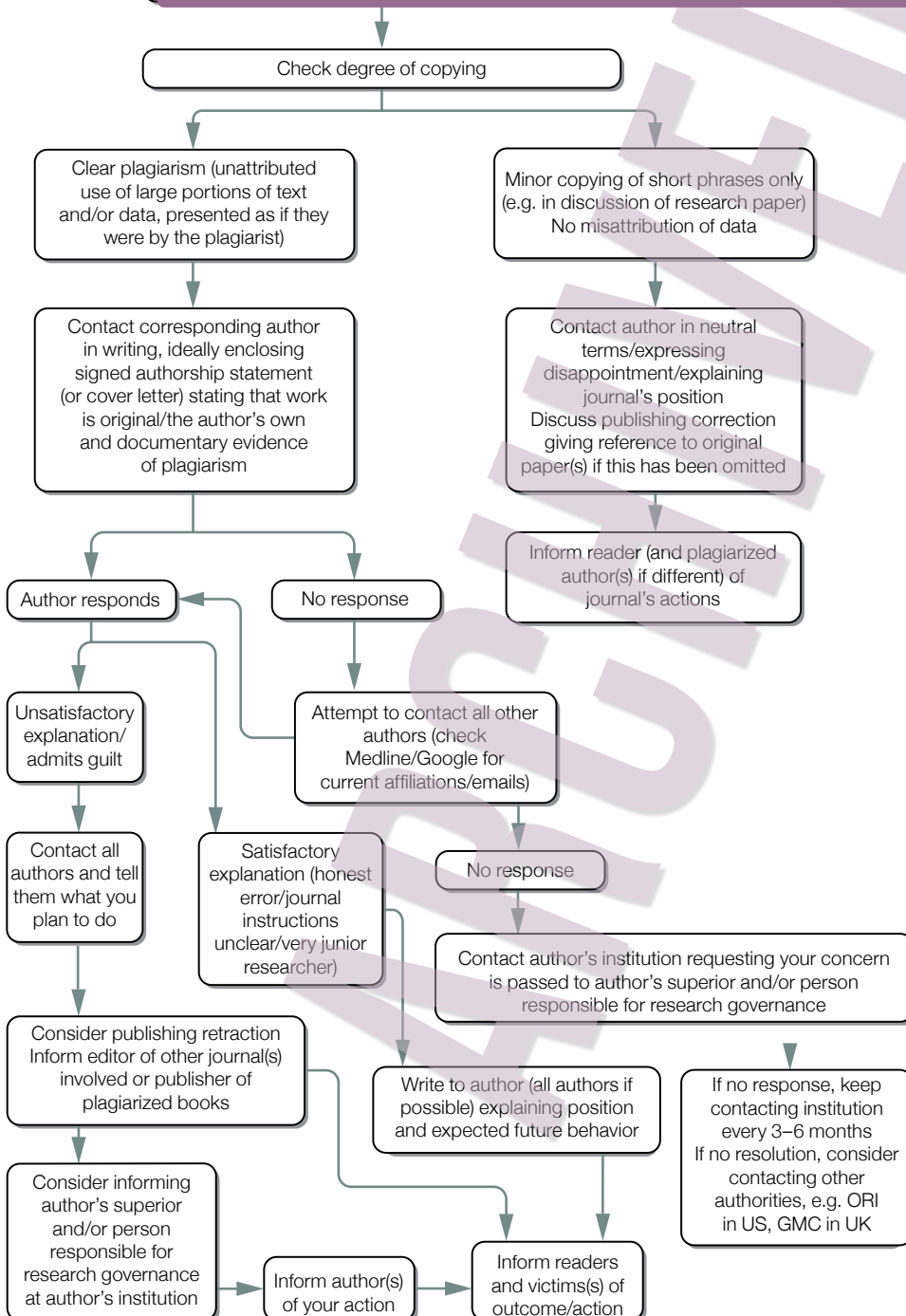
## (b) Suspected plagiarism in a published manuscript

**YOU ARE VIEWING AN ARCHIVED VERSION OF THIS DOCUMENT**

View the latest version at

<https://doi.org/10.24318/cope.2019.2.2>

**Note**  
The instructions to authors should include a definition of plagiarism and state the journal's policy on it



Developed for COPE by Liz Wager of Sideview ([www.lizwager.com](http://www.lizwager.com)) © 2013 Committee on Publication Ethics First published 2006

A non-exclusive licence to reproduce these flowcharts may be applied for by writing to: [cope\\_administrator@publicationethics.org](mailto:cope_administrator@publicationethics.org)